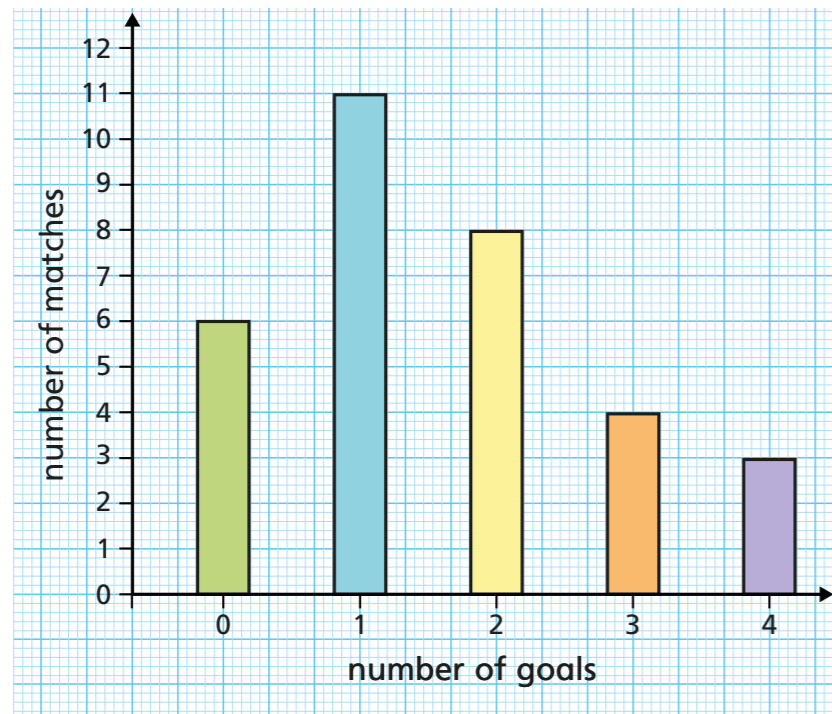


Solve problems with bar charts and line charts

1 The bar chart shows the number of goals scored by a hockey team in a season.



a) How many matches were played in the season?

32

b) In how many matches did the team score at least three goals?

7

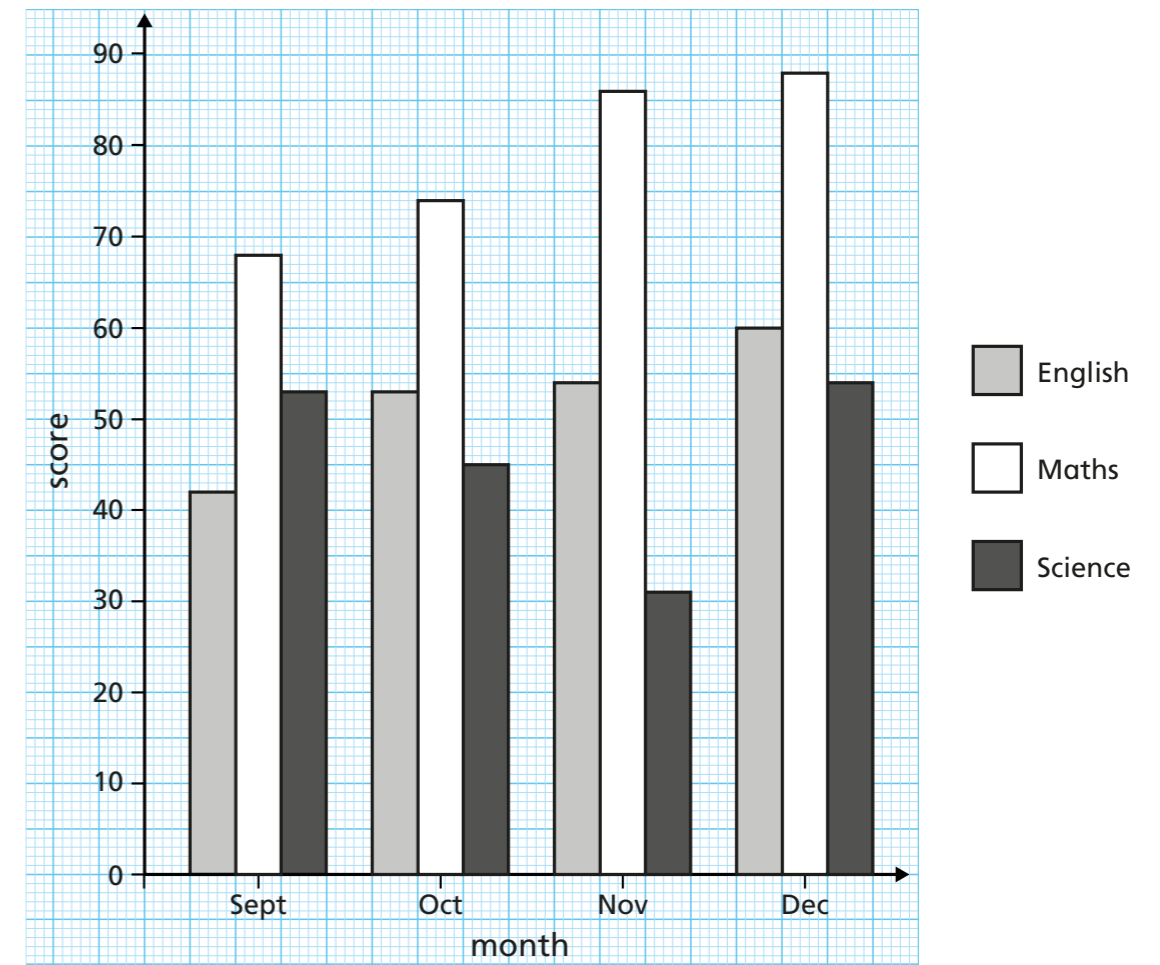
c) What is the range of the number of goals scored?

4

d) How many goals did the team score altogether in the season?

51

2 The bar chart shows Scott's scores in tests in English, Maths and Science in four months at school.



a) What was Scott's score in Maths in October?

74

b) Work out the total of Scott's scores in December.

202

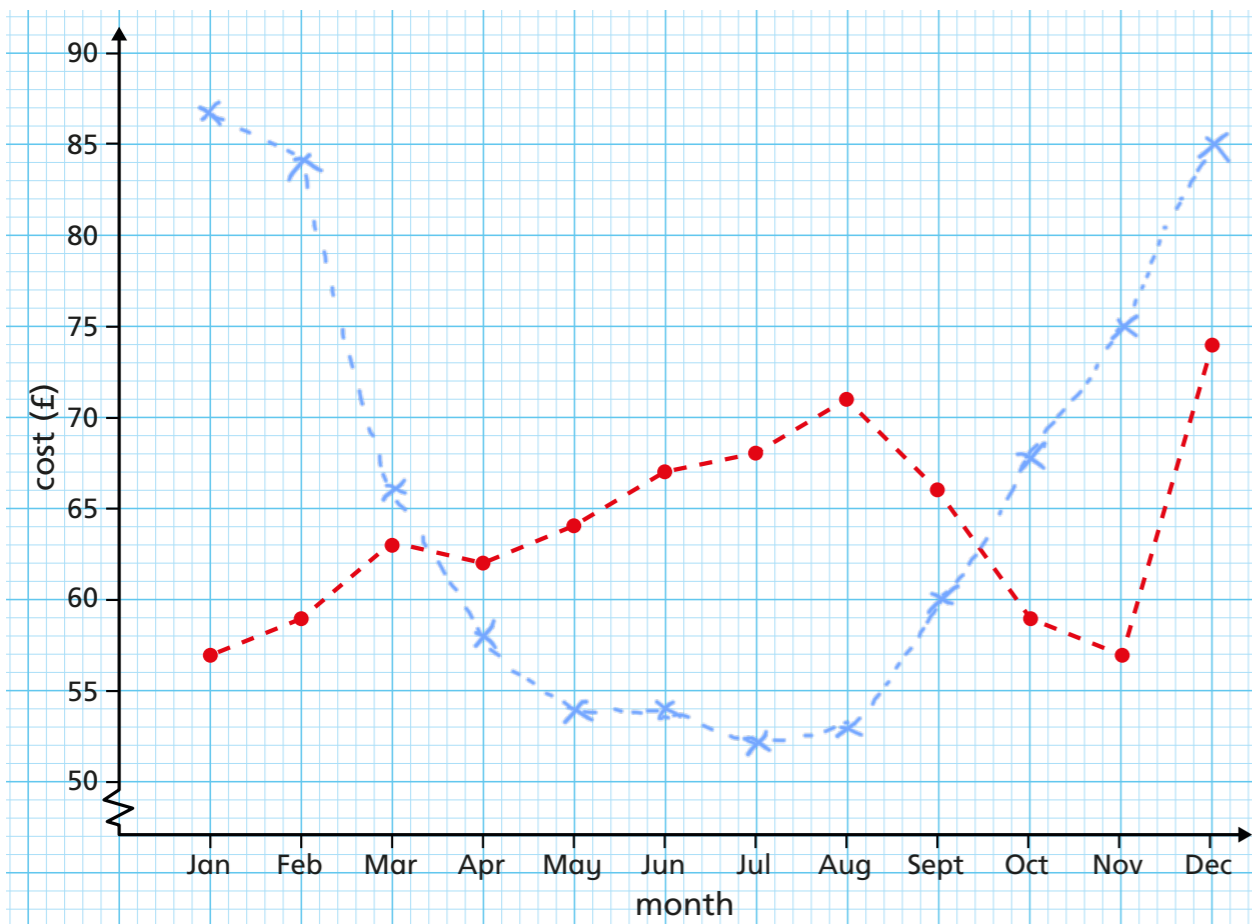
c) Find the difference between Scott's Maths and Science scores in November.

55

d) Describe how Scott's scores changed in each subject over the four months.

He has consistently improved in maths and English, more so in maths. His science score was decreasing but improved in December.

3 The line chart shows how a monthly phone bill changes over a year.



a) For how many months was the phone bill over £60?

8

b) What is the range of the phone bills?

£17

c) Between which two months was the greatest increase?

November and December

d) Work out the total of the phone bills for June, July and August.

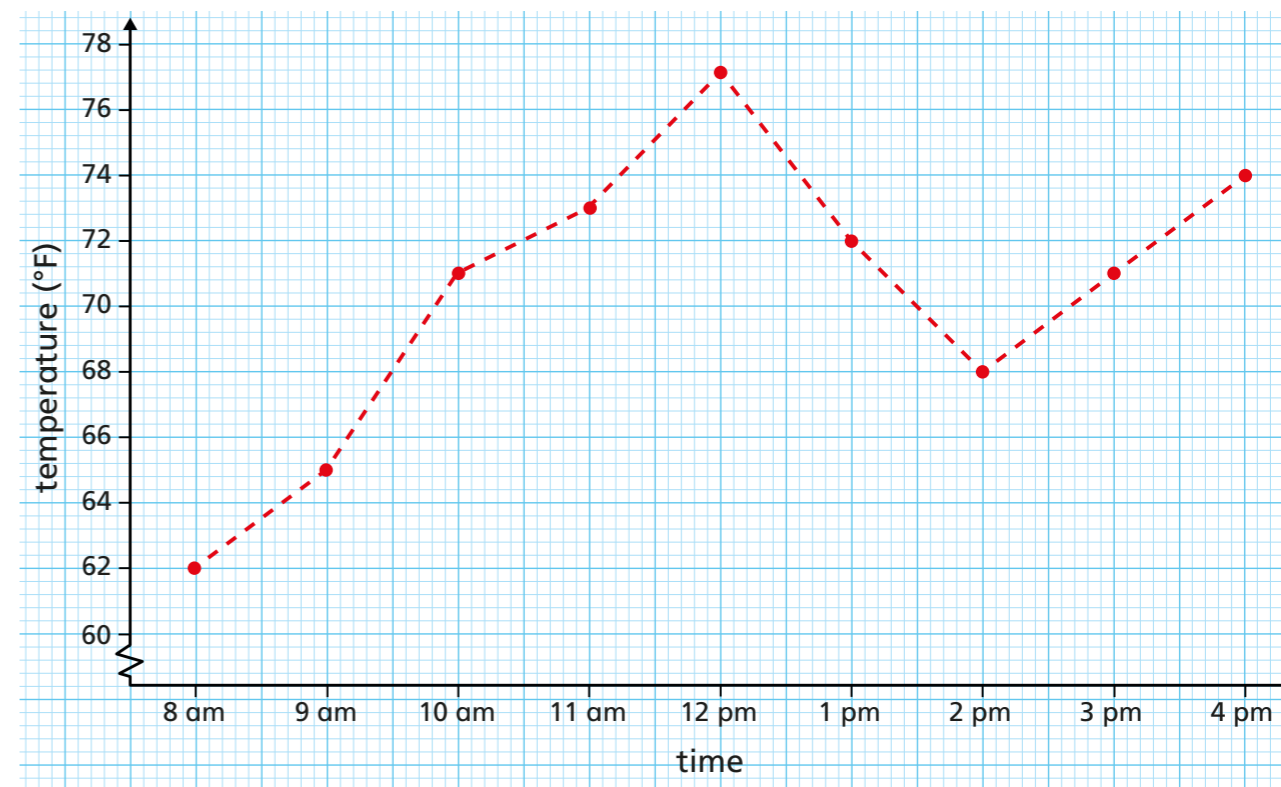
£206

e) The table shows the gas bills for the same period.

Add these to the graph in a different colour.

Month	Jan	Feb	Mar	Apr	May	Jun	Jul	Aug	Sep	Oct	Nov	Dec
Cost (£)	87	84	66	58	54	54	52	53	60	68	75	85

4 The line chart shows the temperature in degrees Fahrenheit in a classroom over a day.



a) Can the graph be used to find the temperature at 11:30 am?

Explain your answer.

No - temperature isn't necessarily increasing/decreasing at a constant rate.

b) How many of the temperature readings are below 70 °F?

3

c) What is the range of the temperatures?

15°F

d) Between which two times was the greatest decrease in temperature?

12 pm and 1 pm

e) During which season of the year was the day these temperatures were recorded? Discuss your answer with a partner.