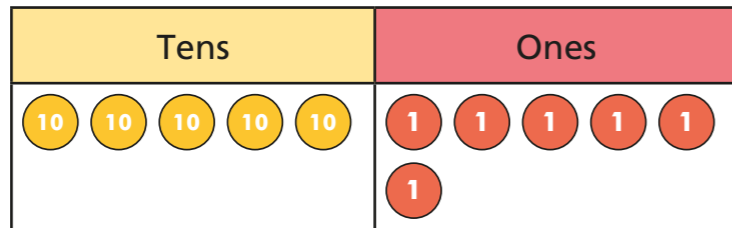


# Use formal methods for subtraction of integers

1 The place value chart shows the number 56

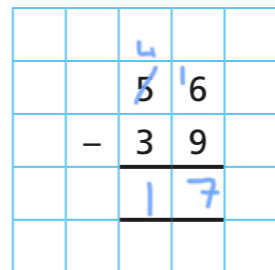
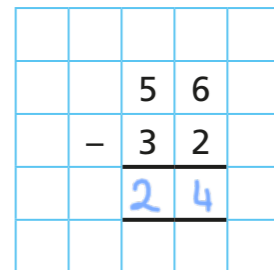


a) Use the place value chart to complete the calculations.

$$56 - 32 = \boxed{24} \qquad 56 - 39 = \boxed{17}$$

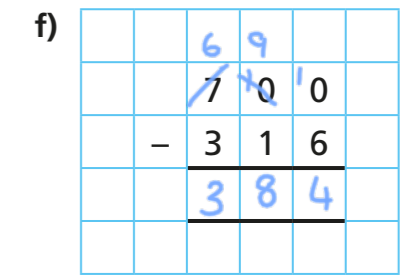
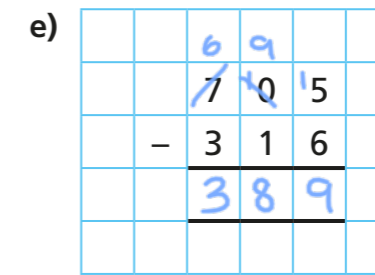
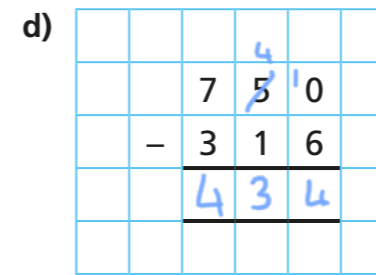
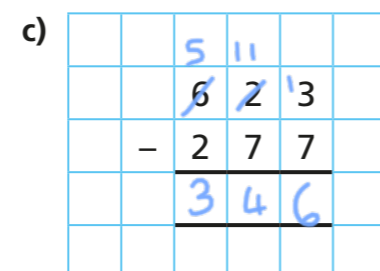
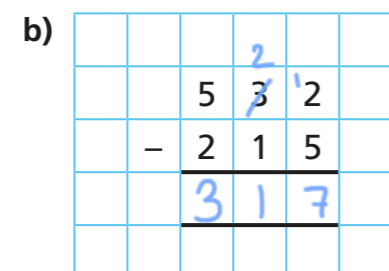
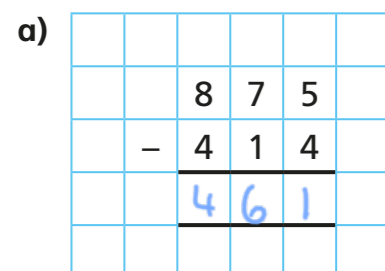
Which calculation was more difficult? Why?

b) Complete the column subtractions.



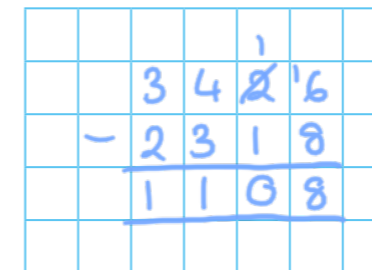
c) What is the same and what is different about the methods in part a) and part b)?

2 Complete the calculations.

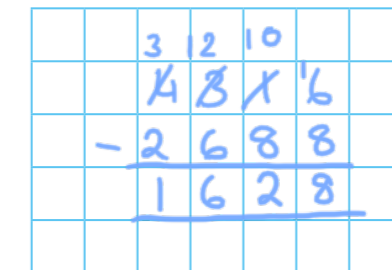


3 Work out the calculations using the column method.

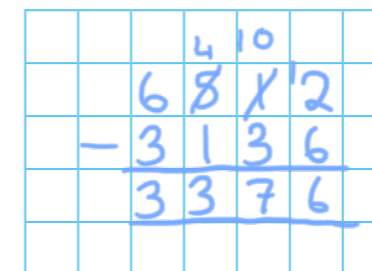
a)  $3,426 - 2,318$



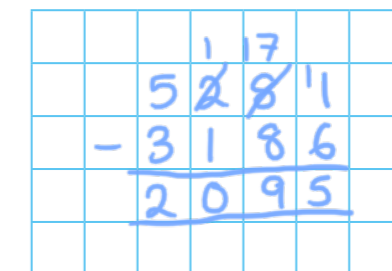
c)  $4,316 - 2,688$



b)  $6,512 - 3,136$



d)  $5,281 - 3,186$



4 Complete the calculations.

a)  $6,387 - 245 = \boxed{6,142}$

c)  $6,387 - 2,045 = \boxed{4,342}$

b)  $6,387 - 2,450 = \boxed{3,937}$

d)  $9,265 - 4,076 = \boxed{5,189}$

- 5 a) What number is four thousand three hundred and twenty-seven less than six thousand five hundred and eighty-six?

$$\begin{array}{r} 6586 \\ - 4327 \\ \hline 2259 \end{array}$$

2,259

- b) What number is four thousand three hundred and twenty-seven less than six thousand and six?

$$\begin{array}{r} 5996 \\ - 4327 \\ \hline 1679 \end{array}$$

1,679

- 6 a) Put these numbers in order of size, starting with the smallest.

650,000

half a million

sixty-eight thousand

three hundred and two thousand

2,700,000

sixty-eight thousand, three hundred and two thousand, half a million, 650,000, 2,700,000

- b) What is the median of the numbers? half a million

- c) Work out the range of the numbers.

2,632,000

- 7 The table shows the number of people who visited a museum in one week.

Mon	Tues	Wed	Thurs	Fri	Sat	Sun
651	873	512	840	1,019	2,643	2,188

- a) Find the difference between the number of visitors on Monday and the number of visitors on Tuesday.

222

- b) Find the range of the number of visitors each day over the week.

2,131

- 8 Solve the equations.

a)  $a + 27 = 63$

$a = 36$

c)  $509 = d + 315$

$d = 194$

b)  $b - 27 = 63$

$b = 90$

d)  $509 = e - 315$

$e = 824$

