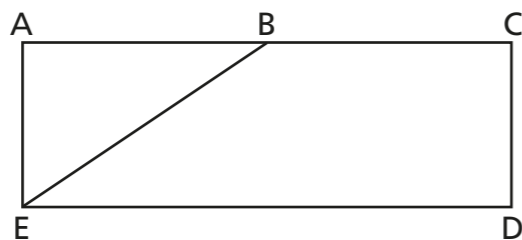


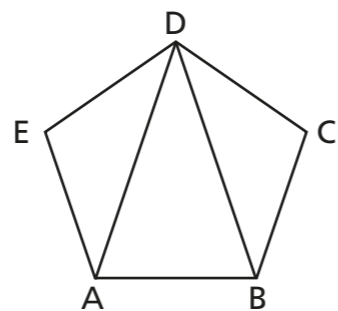
# Understand and use letter and labelling conventions including those for geometric figures

1 Here is a shape with five points marked.



Shade the quadrilateral BCDE.

2 ABCDE is a pentagon.



a) Shade triangle BCD blue.

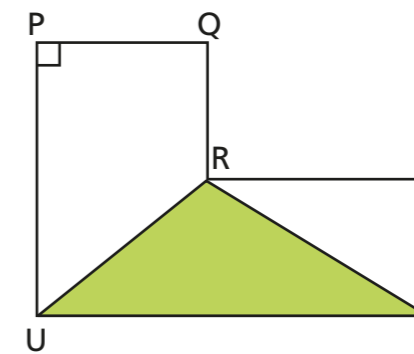
b) Shade one of the other triangles a different colour.

What is this triangle called? \_\_\_\_\_

3 EFGH is a kite. Draw shape EFGH.



4 Here is a shape.



a) Complete the sentences.

Shape RST is a \_\_\_\_\_

PU is a \_\_\_\_\_

Angle \_\_\_\_\_ is a right angle.

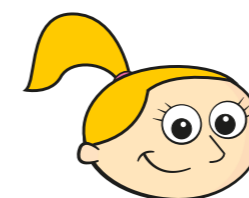
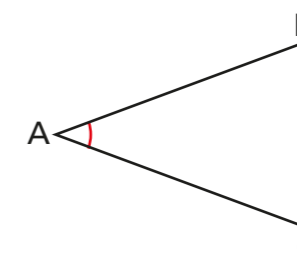
The shaded triangle is called triangle \_\_\_\_\_

b) The shape contains two trapeziums.

Describe the two trapeziums using letters.

\_\_\_\_\_

5 Here is an angle.



The angle shown is ABC.

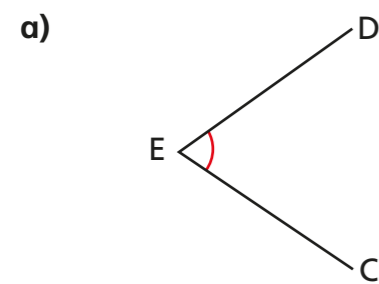
Do you agree with Eva? \_\_\_\_\_

Explain your answer.

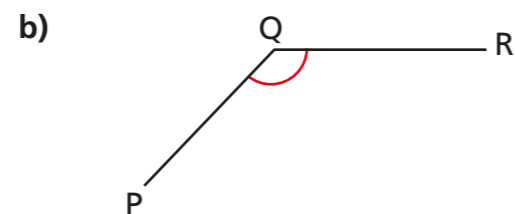
\_\_\_\_\_

\_\_\_\_\_

6 Use three-letter angle notation to describe the angles.

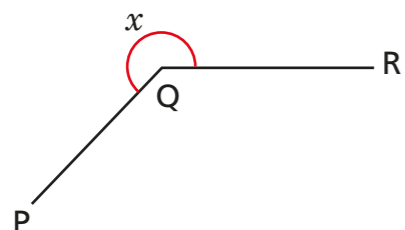


\_\_\_\_\_



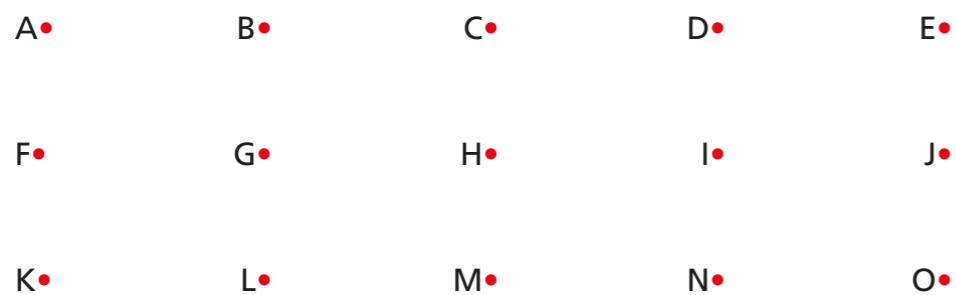
\_\_\_\_\_

c) How would you describe the angle marked  $x$ ?

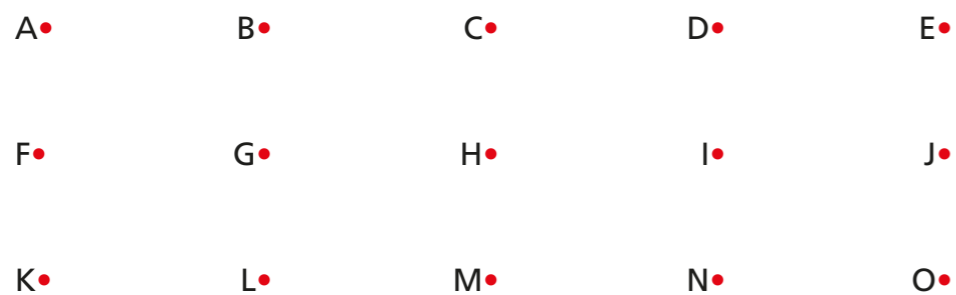


7 Draw the given angles on the grids.

a) Draw angle CLN.

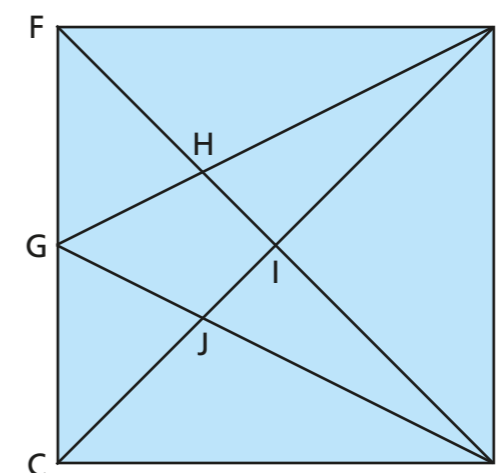


b) Draw angle NLC.



What do you notice?

8 Some lines, angles and shapes have been drawn.



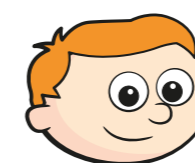
a) Label each angle with the letter shown.

angle  $x$  = angle EDI      angle  $y$  = angle GHD

b) Using letter notation, write the names of:

- two different triangles \_\_\_\_\_
- a kite \_\_\_\_\_
- an arrowhead \_\_\_\_\_
- a vertical line segment \_\_\_\_\_
- a horizontal line segment \_\_\_\_\_

c)



Four letters will always make a quadrilateral.

Prove that Ron is incorrect.

