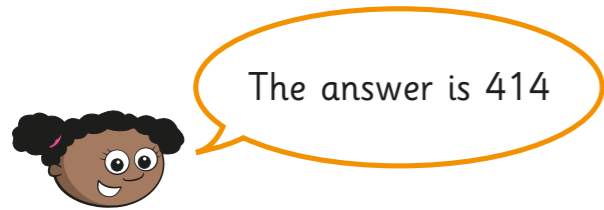


Use estimation as a method for checking mental calculations

1 Whitney is trying to work out $119 + 395$ in her head.



a) Complete the sentences to estimate the answer.

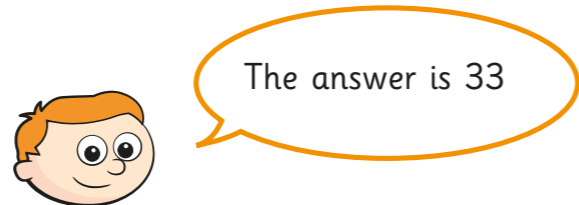
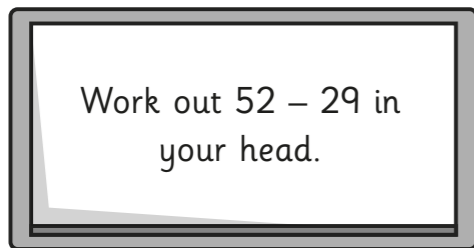
119 is close to

395 is close to

+ =

b) Do you think Whitney is correct, based on your estimate? _____
Explain your answer.

2 Mrs Rose has given her class a question.



a) Use estimation to show that Ron is incorrect.

b) Discuss with a partner what mistake you think Ron made.



3 For each calculation:

- estimate the answer to the question in your head
- work out the answer in your head.

Complete the table.

Calculation	My estimate	My answer
$900 + 3,900$		
$701 - 295$		
99×3		
$196 \div 2$		

4 Use estimation to explain why the statements must be true.

a)

$459 + 972 < 1,500$

b)

$32 \times 6 > 180$

c)

$\sqrt{69} > 8$

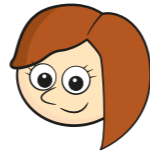
d)

$$\sqrt{4,500} < 70$$

5 Some students have tried to work out some calculations mentally.

a) 19×7

The answer is 133



Do you agree with Rosie? _____

Use estimation to explain your answer.

b) 39×5

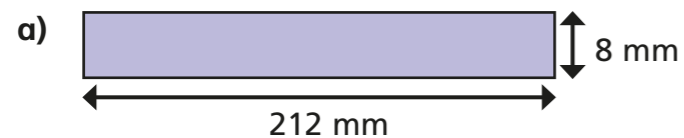
The answer is 205



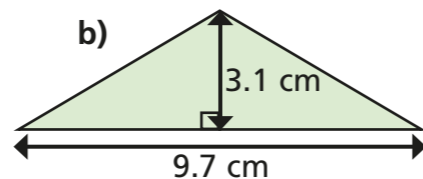
Do you agree with Amir? _____

Use estimation to explain your answer.

6 Estimate the areas of the shapes.

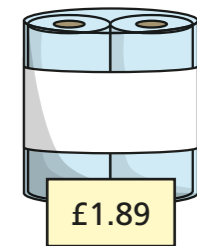
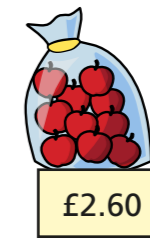
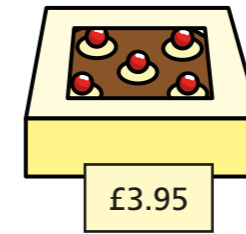


mm²



cm²

7 Mrs Lee wants to buy these items.



She has £10 to spend.

Use estimation to decide if Mrs Lee has enough money.

Tick your answer.

She has enough money.

She doesn't have enough money.

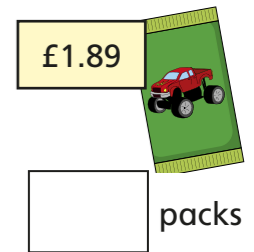
Compare estimates with a partner.

8 Filip receives £10 for his birthday.

He wants to buy as many packs of cards as he can.

a) Estimate how many packs he can buy.

b) Explain how you arrived at your estimate.



packs

9 Estimate the answers to the calculations.

$$£3.85 + £2.12 + £3.44$$

$$\frac{2}{5} \text{ of } 59$$

$$18.94 \times 9$$