

De Lisle College
SIXTH FORM
PROSPECTUS



CONTENTS

Welcome	4
Why De Lisle?	6
Support	10
Facilities	12
Enrichment	14
What's Next?	15
Alumni	16
Praise System	17
Sixth Form Roles & Responsibilities	18

A level courses

Art (Fine Art, Textile Design & Graphic Communication)	19
Biology	20
Business	20
Chemistry	21
Computer Science	21
Drama	22
Economics	22
English Language & Literature	23
English Literature	23
French	24
Further Maths	24
Geography	25
History	25

Mandarin	26
Maths	26
Media Studies	27
PE	27
Physics	28
Politics	29
Psychology	29
Religious Studies	30
Sociology	30
Spanish	31

T Level courses

Introducing T Levels	33
Science	34

BTECs & level 3 courses

Criminology	36
Sport & Physical Activity	36
Extended Project Qualification	38
Programme of Study	39
Entry Requirements & How to Apply	40

WELCOME

We are incredibly proud of the dedicated staff and talented students of De Lisle who together make this an exceptional place to study, to learn and to grow. Combined with first class sixth form facilities and specialist post-16 teaching, we are confident that you will enjoy your time here.

The sixth form years are transformative as you make the transition from childhood to adulthood and, as a Sixth Form College, our total focus is on helping you make that transition a successful one. As you will see from the information in the following pages, De Lisle students not only achieve fantastic results, but also go on to study at some of the most prestigious universities in the UK and beyond.

This success comes about through the careful emphasis we place on equipping our students to be effective independent learners. We want our students to be curious about the world and be ready to confidently take their place in it.

De Lisle College is a busy, vibrant, exciting community of young people who want to make a positive difference: to themselves, their fellow students and their local communities. As a Catholic college, we are a welcoming and nurturing school that educates, inspires and strives for excellence based on the underlying principle of respect for everyone.

We offer a range of academic and vocational pathways, along with the Extended Project Qualification (EPQ) that develops resilient and confident independent learners. As well as catering for those students wishing to study three or four A levels chosen from our comprehensive suite of subjects, we also offer T Levels or a blended approach allowing for a combination of A levels and BTEC level 3 qualifications. This vocational pathway is very well respected by competitive Russell Group universities.

De Lisle is a college of opportunity: we hold high expectations for ourselves and for our students because we want you to be the best version of yourself at the end of your time with us. As such, along with our stimulating and challenging academic courses, the College excels in enrichment and leadership opportunities that encourage personal development by helping students to acquire new skills, take on responsibility and develop personal interests.

We very much look forward to helping you take the first step on your post-16 journey at De Lisle.

Mrs H Tyers

Director of Sixth Form



WHY DE LISLE?

Academic Excellence

As a college, we have a tradition of academic excellence. Attainment at A level and in applied Level 3 qualifications is consistently well above the national average. Each year, approximately 20% of our Year 13 students achieve at least AAB at A level, whilst over 15% of students routinely achieve 3 A grades or better. At the end of Year 13, students move on to a wide range of destinations, including the most competitive universities (such as Oxford and Cambridge), and higher apprenticeships. Students are extremely well-prepared for the next stage of their education or training.

An Effective Independent Learner

Success in employment and higher education depends on the ability to be resourceful, independent and adaptable. To develop these qualities, De Lisle students are given guidance on study skills and independent access to resources and dedicated sixth form facilities, which support their development of skills towards successful progression into the world of work and higher education.

The change between school and College may seem daunting, but our support networks are in place from the teaching staff and tutors to the sixth form team to help you make the next step up successfully. When you start with us, we will expect you to attend college full time so we can guide you through what it means to be an independent learner; how to organise your time, manage your workload, and when and who you should be asking for help.

As you become a more confident and resilient learner, and to prepare you for university or employment we will afford you increased amounts of time outside of college to focus independently on your studies and enrichment activities.

Our teachers are highly experienced in teaching A levels and vocational courses and are focused on supporting your smooth transfer from GCSE and your successful onward progress to university or the world of work. Learning is an exciting business and our teachers want to ensure that it feels that way by offering you a whole variety of learning experiences from one-to-one formative feedback to discussions and student-led debates. The extensive range of lesson activities ensures, that no matter how you learn best, you will find the experience stimulating and possibly life changing!

“A cohesive and inclusive community characterised by students who are respectful to each other”

Ofsted Report



WHY DE LISLE?

Enrichment

A real strength of the De Lisle Sixth Form experience is the significant variety and diversity of enrichment opportunities on offer. All students in Year 12 undertake Enrichment as part of their study programme, with a range of opportunities offered throughout the year.

Skills and talents develop in different ways, and they are not always related to your A level subjects which is why Enrichment is an essential part of your learning. It could even be that you find a new talent or skill through Enrichment that you would like to turn into a hobby or a topic for an Extended Project. Whatever you decide, Enrichment is your chance to try something new and learn in different ways.

Duke of Edinburgh

We have been participating in the Duke of Edinburgh scheme for several years and it has been a great success. Around 100 students take part every year and they really enjoy the challenge, especially the camping expeditions, where they hike 70k+ over five days in the Yorkshire Dales to achieve their Gold Award. The team spirit and camaraderie stay with students when they return and they develop strength of character and, often, enduring friendships.

Extended Project Qualification (EPQ)

Delivered in Year 12, the Extended Project Qualification (EPQ) offers the chance for you to gain real independence, resilience and maturity as an Advanced level learner while pursuing any topic of your choosing. From staging a musical show or designing a carbon-neutral house, to researching ground-breaking cancer therapies or beginning the novel you've always wanted to write, the Extended Project presents a fantastic opportunity both to pursue your interests and to spread your wings.

Taught in a university-style, through seminars and one-to-one tutorials, this qualification prepares you for both higher education and employment. Focusing on all those crucial skills that you develop as you take a project through from drawing board to delivery, it allows you to carve out your unique pathway and follow your interests. The EPQ is well-regarded by universities and is equivalent to half an A level. The project provides evidence that the transition from college to university will be a smooth one for students who have successfully demonstrated their aptitude for independent learning.

Spiritual

As a Catholic Sixth Form, we aim to nurture the faith and spirituality of each student, irrespective of faith. All are welcome within our community and we hope that all can derive something of value from the opportunities that exist for spiritual reflection. A key element of this will be daily opportunities for prayer and reflection during Prep Time, along with the weekly Celebration of the Word, when the whole Sixth Form gathers. Times of reflection, retreat and prayer will be offered in response to events, should they be required and at calendared points throughout the year.

Alongside the faith dimension of the College, there will be many aspects of the curriculum designed with your spiritual development in mind. Religion, Philosophy and Ethics (RPE) will offer you the chance to engage with issues of RPE though your A level choices may touch on issues that cause personal reflection. Every student in De Lisle Sixth Form is required to attend RPE for one hour per week.

House System

De Lisle College operates a vertical house system and every sixth form student will be assigned to one of four houses. The houses are named after our patrons, the English Martyrs Clitherow, Fisher, More and Sherwin. Each house is represented by students from every year group in De Lisle who contribute by earning house points for achievement and success in school. The house system encourages competition and belonging amongst the De Lisle community, whilst providing responsibility and leadership to older students via roles such as House Captain.

Dress Code

Most of our Sixth Form students will progress into professional careers where a uniform or dress code will be expected. Studies have shown that students are more confident and produce better outcomes the longer they are immersed in this type of environment. We see our Sixth Form students as leaders in and around the College and as such we want them to project a smart, professional image. The Sixth Form College dress code based on smart business wear provides straightforward guidelines to help students choose what to wear so that they can focus on their education. Full details of the sixth form dress code can be found on the De Lisle Sixth Form website.

Progress Monitoring

We will help you to take responsibility for your progress by setting meaningful goals for how you can develop as a learner to meet the demands of Advanced level study. Along your post-16 journey your progress will be monitored closely by subject teachers, tutors and the Sixth Form Team. Students at De Lisle undertake regular and robust assessment which is recorded on Go4Schools so you, your parents and carers can see how you are performing in line with your targets.



SUPPORT

We offer you more than just an academic experience at De Lisle College. Starting your A levels and vocational courses is an exciting time for you. As a dedicated Sixth Form Team we will help you to settle quickly into college life and support you in the transition period from being a school pupil to a college student. Being a sixth form student is about learning to be an independent learner and being able to self-evaluate, which means recognising your strengths and weaknesses and taking responsibility for your own learning. The Sixth Form Team at De Lisle will have a clear overview of your academic and personal development and will support you on your way to success. Here are some of the personnel and systems we have in place to ensure that you are supported all the way through your studies.

Personal Tutors

Your personal tutor will be your first point of contact. They will discuss and monitor your academic progress and any concerns you may have. They will liaise with other members of staff to help overcome any barriers to learning that may impact on your progress. If they feel you need extra support, they may refer you to your Head of Year. Personal tutors will also help you with study skills, UCAS personal statement writing and exam skills as you progress through the college.

Student Services

A range of college services are available to help you become a successful independent learner through social, personal and academic development. These include a dedicated exams officer, librarian and finance team.

Head of Year

Head of Year ensures you settle into college, thrive and develop learning skills and resilience so that you can progress to your desired destination. They will monitor your academic progress, attendance and wellbeing and may refer you to internal or external support services if required.

Sixth Form Careers & Guidance Officer

Our Sixth Form Officer is a non-teaching member of staff available to offer information, advice and careers guidance. Throughout the year they arrange careers events and provide advice when applying to university or other destinations, as well as helping with work experience applications and gap year options. They are also on hand at key dates such as results time.

Sixth Form Pastoral Officer

Our Sixth Form Pastoral Officer offers additional support to students and is an important point of contact for students during the day.

Additional Learning Support

If you have a different or additional learning need, you can receive extra help: individual study support, dyslexia screening and assessment, assistive technology or access arrangements. Our expert learning support staff provide an excellent range of support to help create the best possible learning environment for you.

Chaplain

To support our practice and understanding of faith we have a full-time College Chaplain who works to provide opportunities for spiritual enrichment and worship. These include daily prayer, Celebration of the Word, the celebration of Mass and planned residential trips, for time away to reflect on our faith.

Health and Welfare

We are very proud of our pastoral support and strongly believe in promoting health and welfare issues at De Lisle. You will have the opportunity to talk to professionals from external organisations if you need specific advice and information.

Counselling Service

If deemed necessary, a confidential counselling service can be arranged to support you.

Safeguarding Officers

All senior members of the leadership team are fully trained as Designated Safeguarding Leads (DSL) to support your emotional, mental and physical wellbeing.

Bursary

De Lisle, in common with other sixth form centres, has been allocated a sum of money to be allocated to sixth form students facing financial hardship to help them remain in education. This means-tested bursary can be used to pay for a range of support to help your post-16 education such as transport costs, trips, dress code items, textbooks and equipment. A letter outlining the full eligibility criteria and an application for the bursary are available on the De Lisle College website.

Funding Organisations

Catenians

Can help fund Christian-related projects.

Clarke & Somerville Foundation

Can help fund, in cases of hardship, uniforms, books, teaching aids, computers, transport to Open Days etc.

Students need to live in the borough of Charnwood.

Mountsorrel Education Fund

A non-means tested fund in which students can receive up to £400 per year including university years.

Students need to live in Mountsorrel.

Nottingham Diocese

Can help fund transport to college.



FACILITIES

As all of our sixth form students are learning independence, they need dedicated spaces to study, to collaborate on group projects and occasionally socialise during their study periods.

Our school caters for 11-18 year olds but as a post-16 student you will have dedicated study and social spaces to help you to get the balance right between work and play: essential preparation for higher education!

Sixth Form Study Centre

There are three dedicated sixth form study spaces around the College. Students can use the Sixth Form Study Centre, the Library and the Ambrose Centre to work, read and revise.

Students at De Lisle benefit from a dedicated study centre, which has been fully refurbished to the highest specifications. The Study Centre is both stylish and practical, providing students with a stimulating environment in which to carry out individual work, whilst the Ambrose Centre is perfect for working on group projects.

Chapel

At the heart of our school building is our chapel. Its doors and space are open all day every day. This offers access to an area that is gentle, quiet and reflective. It is a welcome space for finding a period of calm and reflection within the pressure of sixth form life, especially during exam time. The chapel is also open and welcoming to all our students, of all faith backgrounds.

Library

The library at De Lisle provides a light and airy environment in which to study with over 15,000 fiction and non-fiction books. The library is open each day. A librarian is on hand to assist students with research and obtaining specialist texts. De Lisle Library is a member of the Pilkington Library at Loughborough University and you can borrow books by using the university membership cards.



ENRICHMENT

Enrichment Programme

The enrichment programme at De Lisle is an important part of sixth form life. It will enable you to meet new people and develop broader skills which are valued by universities and employers. Sixth Form students are offered a range of weekly enrichment activities in which they can take part. At the beginning of the academic year students choose from a wide range of activities with the aim of developing new interests, hobbies and talents.

Opportunities

There are also exciting opportunities for other enrichment and travel opportunities ranging from supporting in local primary schools to trips overseas. The programme is flexible and supportive and can be adapted to meet your changing needs.

WHAT'S NEXT?

Life after De Lisle

One of the most important things we do as a Sixth Form College is to help you to decide on your career goals and then to support you in fulfilling them. The Sixth Form Team at De Lisle are all post-16 specialists, dedicated to providing you with the very best advice about your next steps, whether you are considering traineeships, higher education, apprenticeships or any other pathway.

Believe it or not, your two-years at the College will go very quickly, which is why we encourage you to start talking to us early in Year 12 about what you might like to do next. It doesn't matter if you're not sure, what's important is that your studies with us get you where you want to go.

For most students, the process of researching opportunities and making choices takes place during Year 12, in readiness for applications to higher education (HE) early in Year 13. We facilitate this research with visits to local higher education fairs and encourage university visits towards the end of Year 12. Information events for parents are arranged concerning UCAS applications, gap year activities and HE finance, as well as mock interviews for students.



Oxbridge admissions talk by Luke Maw, Schools Liaison Officer for St. Edmund Hall, University of Oxford

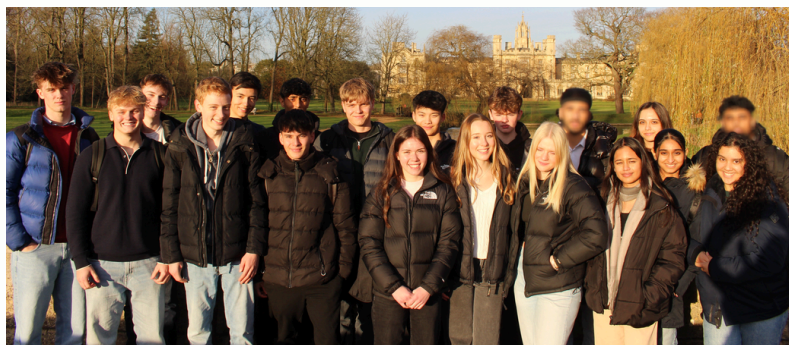


Oliver King, Group Managing Director of Aldi, and former student, speaking to Sixth Form students

Oxbridge

De Lisle students have enjoyed considerable success in the past when making applications to both Oxford or Cambridge and to prestigious medical schools. Our early-entry programme identifies potential Oxbridge, medical, dental and veterinary candidates at the start of their sixth form careers and provides them with every support necessary for success. Students are often able to visit Oxford or Cambridge. We have long established links with colleges at both universities, as well as with local medical schools.

Within our dedicated programme, we arrange talks by admissions tutors, support students with supra-curricular activities and personal statements, and provide students with interview practice. If students have the ability and drive to succeed, we have the expertise to enable them to realise their dreams.



Sixth Form Students Explore Economic History and Innovation at Cambridge University

ALUMNI

Recent destinations of sixth form students include the most competitive universities, as well as elite apprenticeships or employment. A number of students every year choose to take gap years, during which,

support is made available for those making a UCAS application for the following year.

Recent destinations include veterinary science at Liverpool, Nottingham and Bristol, English

at Cambridge, medicine at Nottingham, and law and PPE at Durham. Students routinely progress from De Lisle to Oxbridge and to courses in medicine, dentistry and veterinary medicine.

Recent Alumni



LIBBY

Achieved:
A - French
A - Politics
A - Geography

Reading:
French
at Oxford University



ARRIAN

Achieved:
A* - Maths
A* - Biology
A - Chemistry

Reading:
Medicine at
Imperial College, London



AVISHA

Achieved:
A - Maths
A - Chemistry
A - Biology

Reading:
Chemistry at the
University of York

ANNA



Achieved:
A* - Spanish
A - French
A - Politics
A - History

Reading:
Politics and International
Relations at Durham
University

MATTHEW



Achieved:

A* - Biology
A* - Chemistry
A - Maths

Reading:
Medicine at the University
of Leeds

PRAISE SYSTEM

Everyone appreciates positive recognition when they do something good or achieve beyond what is expected, and sixth form students at De Lisle are no different. To recognise success and contributions above and beyond, De Lisle operates a praise and reward system that gives everyone the opportunities to be recognised for doing well.

Students receive house points from their teachers when they do well in class, make positive contributions around college or achieve something special. These contribute to the House system competitions.



SIXTH FORM ROLES & RESPONSIBILITIES

We like all students to become active members of our community. In the sixth form we provide numerous opportunities for students to improve their skills of enquiry and communication, to exercise their rights and responsibilities effectively, and to develop their role as well-informed and active citizens.

Sixth Form Committee

The elected Head Boy and Head Girl lead a team of Senior Prefects (Year 13) and Prefects (Year 12) to affect positive change across the college, assist younger students and support college events. The Prefects represent sub-committees, responsible for Spiritual Life, Communications, Well-Being, Engagement, Achievement and Community. The Head Boy and Head Girl ensure that older students have a voice in college and serve as the main channel of communication between sixth form students and college management.

Year 12 students are invited to apply to become a Prefect when they first join the College.

Head Boy & Head Girl

The Head Boy and Head Girl are the most senior students in the College and are the figureheads of the De Lisle student body.

They lead a large team of fellow sixth form students in the Sixth Form Committee, attend regular meetings with the Director of Sixth Form/Headteacher and represent the Sixth Form at school events. They are supported in their roles by a Deputy Head Boy and a Deputy Head Girl.

Prefects in Year 12 and sixth form students representing the School Council are eligible to apply for the role of Head Boy or Head Girl during the following Spring term, with their term in post running for one year from Easter to Easter.



Speaking during welcoming Mass.



Macmillan cake sale by our Sixth Form Students.



Senior volunteering at our Open Evening.

A LEVELS

Art
 Biology
 Business
 Chemistry
 Computer Science
 Drama
 Economics
 English Language & Literature
 English Literature
 French
 Further Maths
 Geography
 History
 Mandarin
 Maths
 Media Studies
 PE
 Physics
 Politics
 Psychology
 Religious Studies
 Sociology
 Spanish



ART FINE ART, TEXTILE DESIGN & GRAPHIC COMMUNICATION

What will I study?

We offer the option of specialising in fine art or textile design at A level.

During these courses you will follow a broad and balanced study of art which relates theory to practice and encourages freedom of choice.

In fine art you will produce work in areas including drawing, painting, mixed media and printmaking.

In textile design you will produce work in areas including fashion textiles, domestic textiles, printed and dyed fabrics, constructed textiles and art textiles.

In Graphic Communication you will work in areas such as illustration, typography, layout design, packaging and advertising.

Assessment

A coursework unit and an exam unit.
60% coursework, 40% exam.

Exam Board

OCR

Entry Requirements

Minimum grade 5 in GCSE Art

What could this qualification lead to?

This A level would lead directly into subject related university courses and careers, and indirectly into a wide range of higher education courses and career choices.

- BA (Hons) Art & Design
- BA (Hons) Art History
- Careers in design e.g Graphic Designer
- Careers in engineering and construction e.g. Product Designer



BIOLOGY

What will I study?

The Biology A level has been developed to engage and inspire students by showing how an understanding of many issues requires a grasp of biological ideas. Well-chosen content provides an enjoyable learning experience and allows progression to further study. It forms a sound basis for applications to courses in biological sciences, any of the medical or environmental disciplines – or an interesting additional A level subject in its own right, to be used in applications in other areas.

Assessment

There are three papers of equal weighting, each contributing to one third of the overall A level grade.

Exam Board

Edexcel

Entry Requirements

Minimum grade 6 in GCSE Biology or 6/6 in Combined Science

What could this qualification lead to?

This A level would lead directly into subject related university courses and careers, and indirectly into a wide range of higher education courses and career choices.

- BSc (Hons) Biology
- BSc (Hons) Biological Sciences
- Careers in science e.g. Biochemist
- Careers in healthcare e.g. Immunologist



BUSINESS

What will I study?

You will study the nature of business using business models, theories and techniques to support analysis of contemporary business issues and situations. The content contains topics and issues that are relevant in today's society, through key contemporary developments such as digital technology, business ethics and globalisation. You will be able to assess and understand the activity of a business from the financial aspect to the strategic actions that the business is taking.

Assessment

There will be three exams at the end of year 13 that cover all content of the course and supported by a pre-release case study.

Exam Board

AQA

Entry Requirements

Minimum grade 5 in GCSE Business Studies or grade 5 in English and Maths if not studied.

What could this qualification lead to?

This A level would lead directly into subject related university courses and careers, and indirectly into a wide range of higher education courses and career choices.

- BA (Hons) Business
- BA (Hons) Business & Management
- Careers in industry e.g. Business Analyst
- Careers in business e.g. Marketing Manager



CHEMISTRY

What will I study?

Chemistry is an exciting and intellectually stimulating course that will develop your understanding of the theory and practice underpinning the modern chemical sciences. Much of the teaching in A level Chemistry is backed up by practical work which complements and reinforces the topic being taught. This course is the perfect opportunity to deepen your own understanding and enjoyment of the chemical sciences whilst obtaining a solid foundation on which to complete further study.

Chemistry is a sensible choice for courses such as medicine, dentistry, veterinary medicine or any of the sciences. A chemistry A level is also desirable for any course or career where clear thinking and a methodical approach are required.

Assessment

Three papers are sat at the end of the second year and contribute to the final grade:

Periodic table, elements and physical chemistry (37%)

Synthesis and analytical techniques (37%)

Unified chemistry (26%)

There is also a practical endorsement which is reported separately.

Exam Board

OCR

Entry Requirements

Minimum grade 6 in GCSE Chemistry or 6/6 in Combined Science

What could this qualification lead to?

This A level would lead directly into subject related university courses and careers, and indirectly into a wide range of higher education courses and career choices.

- BSc (Hons) Chemistry
- BSc (Hons) Pharmacology
- Careers in science e.g. Chemical Engineer
- Careers in medicine e.g. Pharmacist/Doctor



COMPUTER SCIENCE

What will I study?

Computer science is an exciting and challenging subject that gives you the opportunity to study how we solve problems in the modern world. You will develop useful practical skills in programming, whilst also looking at the broader academic concepts of computational thinking and computer systems.

You will learn how to solve problems with a logical and methodical approach, structuring solutions through the use of abstraction and decomposition. These are vital skills for important job roles in our future.

The coursework element gives you vital experience in managing a large-scale software project, and helps build independent learning and self-management; all of which are essential skills for students looking to attend university.

Assessment

Two exams worth 80% of total A level.

A coursework project worth 20% of the total A level.

Exam Board

OCR

Entry Requirements

Minimum grade 6 in GCSE Computer Science and Maths

What could this qualification lead to?

This A level would lead directly into subject related university courses and careers, and indirectly into a wide range of higher education courses and career choices.

- BEng (Hons) Computer Systems Engineering
- BSc (Hons) Software Engineering
- Careers in industry e.g. IT Engineer
- Careers in the computing e.g. Software Developer



DRAMA

What will I study?

Drama and theatre is a subject that by its nature requires you to consider individual, moral, ethical, social and cultural issues. As a subject, it develops the key skills required in all industries such as collaboration, communication, resilience and independence.

The specification provides a good balance between the practical and the theoretical aspects of the subject. You will act from classic as well as contemporary texts and devise theatre of your own in response to a stimulus. You will also explore a range of different theatre practitioners and theatre companies and apply their methods and conventions to performance work of your own. Furthermore, there will also be opportunities for theatre visits to broaden your experiences and develop an analytical voice.

Assessment

A Level: 60% performances and logs/reports;
40% written exam.

Exam Board

Eduqas

Entry Requirements

Minimum grade 5 in GCSE Drama or English if not studied at GCSE

What could this qualification lead to?

This A level would lead directly into subject related university courses and careers, and indirectly into a wide range of higher education courses and career choices.

- BA (Hons) Performing Arts
- BA (Hons) Theatre and Performance
- Careers in the theatre e.g. Theatre Stage Manager
- Careers in TV, film and stage



ECONOMICS

What will I study?

Economics is not simply the study of numbers but also the world around us from social to financial perspectives. Economics looks at the theories and interrelationships between microeconomic and macroeconomic issues. At Russell Group universities it is regarded as a highly academic field of study which provides underpinning knowledge and skills to a wide range of further studies and professions.

The AQA A-level Economics specification covers different Economic topics as a social science, economic theories, understanding production and productivity, economies and dis-economies of scale, market structure, differing firm objectives between firms, aggregate supply and aggregate demand, fluctuations in economic activity and economic growth, employment, unemployment, inflation, price mechanisms, monetary and fiscal policy, how and why governments intervene in the economy, the theory of money, banking, financial markets and the role of the World Trade Organisation.

Assessment

3x Written Examinations worth 33.3% each. Each
2-hours, 80 marks.

Exam Board

AQA

Entry Requirements

Minimum grade 5 in GCSE Economics,
Business Studies or English and Maths
if not studied at GCSE.

What could this qualification lead to?

This A level would lead directly into subject related university courses and careers, and indirectly into a wide range of higher education courses and career choices.

- BSc (Hons) Economics
- BSc (Hons) Maths
- Careers in finance e.g. Economics Analyst
- Careers in the business sector e.g. Accountant



ENGLISH LANG. & LITERATURE

What will I study?

The course focuses on developing sophisticated reading skills, analysing language at word and sentence level and exploring how language is used in a broad range of texts. It is a hugely varied course, exploring literature from different historical periods and settings. You will explore writing and speech in a wide range of forms, and develop your skills of interpretation through a combination of linguistic and literary approaches.

Assessment

A Level: Three exams (80%) and coursework (20%)

Exam Board

Eduqas

Entry Requirements

Minimum grade 6 in GCSE English Literature or English Language

What could this qualification lead to?

This A level would lead directly into subject related university courses and careers, and indirectly into a wide range of higher education courses and career choices.

- BA (Hons) English Language
- BA (Hons) English Literature
- Careers in education e.g. Primary/Secondary
- Teacher
- Careers in journalism e.g. Journalist



ENGLISH LITERATURE

What will I study?

The course encourages wide and independent reading of both set texts and others that you have selected for yourself. You will engage critically and creatively with texts and explore ways of responding to them, developing your knowledge of literary analysis and evaluation.

You will also explore the contexts of the texts you are reading and others' interpretations of them, as well as undertaking independent studies to deepen your appreciation and understanding of English Literature, including its changing traditions.

Assessment

A Level: Three exams (80%) and coursework (20%)

Exam Board

Eduqas

Entry Requirements

Minimum grade 6 in GCSE English Literature

What could this qualification lead to?

This A level would lead directly into subject related university courses and careers, and indirectly into a wide range of higher education courses and career choices.

- BA (Hons) English Literature
- BA (Hons) English and Comparative Literature
- Careers in publishing e.g. Publicist
- Careers in journalism e.g. Editor



FRENCH

What will I study?

During the A level course you will study a variety of themes and sub-themes to help you communicate effectively across a range of issues:

Aspects of French-speaking society: current trends:

- La famille en voie de changement
- La cyber-société • Le rôle du bénévolat

Artistic culture in the French speaking world:

- Une culture fière de son patrimoine
- Cinéma: le septième art • La musique francophone contemporaine

Dossier cinéma et littérature:

- L'étude du film L'auberge espagnole

The year 12 course builds confidence and provides a solid foundation for the study of the themes and sub-themes in year 13.

Aspects of French-speaking society: current issues:

- Les aspects positifs d'une société diverse
- Quelle vie pour les marginalisés? • Comment on traite les criminels

Aspects of political life in the French-speaking world:

- Les ados, le droit de vote et l'engagement politique
- Manifestations, grèves - à qui le pouvoir?
- La politique et l'immigration

Dossier cinéma et littérature:

- L'étude du texte Un sac de billes

All four linguistic skills, grammatical awareness and vocabulary acquisition will be extended, practised and refined.

Assessment

Paper 1: Listening, reading, writing = 50%

Paper 2: Writing: dossier cinéma et littérature = 20%

Paper 3: Speaking = 30%

Exam Board Entry Requirements

AQA

Minimum grade 5 in GCSE French

What could this qualification lead to?

This A level would lead directly into subject related university courses and careers, and indirectly into a wide range of higher education courses and career choices.

- BA (Hons) French
- BA (Hons) Modern Languages and Culture
- Careers in business e.g. Export Manager
- Careers in international relations e.g. Diplomat/Politician



FURTHER MATHS

What will I study?

Further Maths is an A level qualification which broadens and deepens the mathematics covered in the main A level.

Further Maths is taken alongside an A level in Mathematics. The qualification is linear which means that you sit all exams at the end of the two year course. Students overwhelmingly find it to be an enjoyable, rewarding, stimulating and empowering experience.

The qualification is highly regarded and is warmly welcomed by universities.

Assessment

There will be a 6 hour assessment split over 4 exams.

Core pure: 50% of total A level.

Mechanics minor: 16⅓% of the total A level

Statistics minor: 16⅓% of the total A level

Modelling with algorithms: 16⅓% of the total A level

Exam Board

OCR (MEI)

Entry Requirements

Minimum grade 8 in GCSE Maths

What could this qualification lead to?

This A level would lead directly into subject related university courses and careers, and indirectly into a wide range of higher education courses and career choices.

- BSc (Hons) Maths
- BSc (Hons) Economics
- Careers in finance e.g. Stock Broker
- Careers in the business sector e.g. Chief Financial Officer



GEOGRAPHY

What will I study?

Students with an interest in physical, human and environmental geography will find this course particularly engaging as it offers much understanding of our planet. Knowledge and understanding of the core themes along with fieldwork and research skills are key features of this course. An element of out-of-classroom activity, both teacher led and by independent research augments the class based study of geography at A level. The course includes traditional geographical topics such as 'tectonic processes', 'globalisation' and 'glaciated landscapes' with less familiar themes such as the 'Diverse Places' adding a new dynamic to students' geographical studies.

Assessment

A Level: 3 exams and one piece of coursework

Paper 1: 30%

Dynamic landscapes and physical systems & sustainability

Paper 2: 30%

Dynamic places and human systems & geopolitics

Paper 3: 20%

Synoptic investigation a 3000-4000 word investigation report.

Non-examination assessment (coursework): 20%

Exam Board

Edexcel

Entry Requirements

Minimum grade 5 in GCSE Geography or grade 5 in English & Maths if not studied at GCSE

What could this qualification lead to?

This A level would lead directly into subject related university courses and careers, and indirectly into a wide range of higher education courses and career choices.

- BA (Hons)/BSc (Hons) Geography
- BA (Hons) Geography with Business
- Careers in environmental management e.g. Environmental Consultant
- Careers related to climatology e.g. Meteorologist



HISTORY

What will I study?

This is a highly academic and challenging subject recognised as a 'facilitator' subject by Russell Group universities. It is made up of three parts:

- The English Revolution 1625-1660
- The Quest for Political Stability: Germany, 1871-1991
- A historical enquiry question which will be generated by candidates but will cover Russian history between 1825-1941

You will investigate a variety of themes, issues and debates relating to this fascinating time in world history.

Assessment

Year 13: Two examinations and one 3500 word historical enquiry.

Exam Board

AQA

Entry Requirements

Minimum grade 5 in GCSE History or grade 5 in English if not studied at GCSE

What could this qualification lead to?

This A level would lead directly into subject related university courses and careers, and indirectly into a wide range of higher education courses and career choices.

- BA (Hons) History
- BA (Hons) History & Politics
- Careers in law e.g. Solicitor
- Careers in journalism e.g. Journalist



MANDARIN

What will I study?

The International Baccalaureate (IB) Mandarin programme gives students who have previously studied Chinese the opportunity to continue to improve their Chinese reading, writing, listening and speaking skills while studying their other A-Level subjects.

IB Chinese is organised around five broad themes: identities, experiences, human ingenuity, social organisation and sharing the planet. These themes are intended to prepare students to make positive contributions to today and tomorrow's global society via the medium of Mandarin Chinese.

Assessment

Paper 1: Productive skills (writing) = 1 hour 15 mins (25%)

Paper 2: Receptive skills (reading and listening) = 1 hour 45 mins (25% + 25%)

Internal assessment: Interactive skills (speaking) = 15 mins + preparation time (25%)

Exam Board

International Baccalaureate

Entry Requirements

Minimum grade 8 in GCSE Mandarin

What could this qualification lead to?

This qualification would lead directly into subject related courses and careers and indirectly into a wider range of higher education courses and career paths.

- BA (Hons) Chinese
- BA (Hons) International Relations or Business with Chinese
- Careers in the business or law sector, e.g. working with international companies who have an interest in China
- Careers in international relations, diplomacy or GCHQ, e.g. politician, diplomat



MATHS

What will I study?

In Year 12 you will study three different strands of mathematics: pure mathematics, including algebra, coordinate geometry, trigonometry and calculus; statistics, including probability, discrete distributions and large data sets; and mechanics, including motion and forces.

In Year 13 you will build on your year 12 study in each of the three strands. Pure mathematics will include advanced algebra and calculus, exponential and logarithmic functions, further trigonometry and differential equations. In statistics you will look at correlation, further probability, and continuous distributions. Mechanics will include the study of friction, moments and projectiles.

Assessment

The course is linear and will be examined at the end of the course. There will be three 2 hour exams.

Exam Board

Edexcel

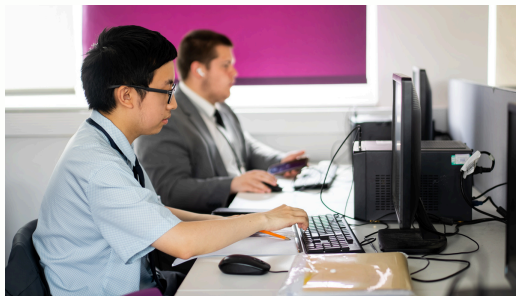
Entry Requirements

Minimum grade 6 in GCSE Maths

What could this qualification lead to?

This A level would lead directly into subject related university courses and careers, and indirectly into a wide range of higher education courses and career choices.

- BSc (Hons) Maths
- BSc (Hons) Economics
- Careers in finance e.g. Economist
- Careers in the business sector e.g. Accountant



MEDIA STUDIES

What will I study?

A level Media is an exciting course, ideal for creative students with an interest in digital media. You will study a range of different forms of media in an academic and practical context. The course is designed to widen your intellectual horizons through the analysis of both global and historical media. You will develop your ability to think critically; analysing media from different perspectives.

You will learn practical media production skills across the different forms of media, producing a portfolio of media products. You will be able to inject your own ideas and style into your work. Using industry standard tools and software, you will learn to produce work to a brief, completing a project in a rigorous manner. This is ideal preparation for those looking to work in the industry.

The combination of theoretical study and practical work will inspire you to learn beyond the confines of the classroom, into higher education, the workplace and beyond.

Assessment

Two externally assessed exams (70%)

Practical project internally assessed (30%)

Exam Board

OCR

Entry Requirements

Minimum grade 5 in GCSE English

What could this qualification lead to?

This A level would lead directly into subject related university courses and careers, and indirectly into a wide range of higher education courses and career choices.

- BSc (Hons) Film & Television
- BA (Hons) Digital Film Production
- Careers in TV/Film creation e.g. Producer
- Careers in Digital Media e.g. Video Editor



PE

What will I study?

Physical education will give you a breadth of knowledge in physical activity and sport performance. The course consists of:

Paper 1:

Factors affecting participation in physical activity in sport

Section A: Applied anatomy and physiology

Section B: Skill acquisition

Section C: Sport and Society

Paper 2:

Factors affecting optimal performance in physical activity and sport

Section A: Exercise physiology and biomechanics

Section B: Sport psychology

Section C: Sport and society and technology in sport

Non exam assessment:

Practical performance in physical activity and sport
Students assessed as a performer or coach in the full sided version of one activity.

Written analysis of performance.

Assessment

Paper 1: Written exam: 2 hours / 105 marks / 35%

Paper 2: Written exam: 2 hours / 105 marks / 35%

Non exam assessment: 90 marks / 30%

Exam Board

AQA

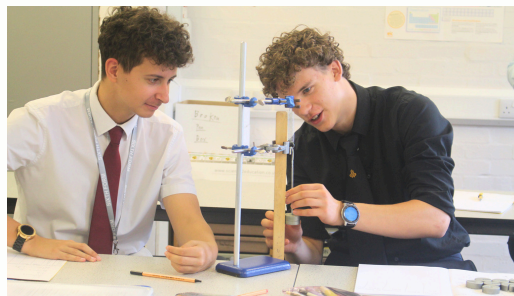
Entry Requirements

Minimum grade 5 in GCSE Physical Education

What could this qualification lead to?

This A level would lead directly into subject related university courses and careers, and indirectly into a wide range of higher education courses and career choices.

- BSc (Hons) Sports Development and Exercise
- BSc (Hons) Sports Science
- Careers in coaching and education e.g. Physical Education Teacher
- Careers in sports management e.g. Sports Development Officer



PHYSICS

What will I study?

Physics is challenging. It takes an agile and dedicated mind, and an ability to follow a problem through to the very end. It needs a mind that can find the essential principles and ask the right questions in the right way. It needs a mind that can investigate the universe and understand what happens.

The course consists of:

Advanced Physics 1: Physics on the move.

This unit involves the study of mechanics, electric circuits, further mechanics, electric and magnetic fields and nuclear and particle physics.

Advanced Physics 2: Physics from creation to collapse.

This unit involves the study of materials, waves and particle nature of light, thermodynamics, space, nuclear radiation, gravitational fields and oscillations.

Paper 3: General and practical principles in physics.

This paper can draw on any of the topics in the specification.

Assessment

There are three papers of weighting:

Advanced Physics 1: 30%

Advanced Physics 2: 30%

Paper 3: 40%

Exam Board Entry Requirements

Edexcel

Minimum grade 6 in GCSE Physics
or 6/6 in Combined Science

What could this qualification lead to?

This A level would lead directly into subject related university courses and careers, and indirectly into a wide range of higher education courses and career choices.

- BSc (Hons) Physics
- BEng (Hons) Aeronautical Engineering
- Careers in science e.g. Physicist
- Careers in aviation e.g. Aeronautical Engineer



POLITICS

What will I study?

The course studies the way in which people become engaged in political issues and the developments occurring within UK and global politics. You will come to understand how both the people and the government are involved in the process and activity of political decision-making. Taking the course, you will be encouraged to become familiar with contemporary political ideas and to contribute your views to discussions and debates on a wide range of topical political issues.

UK POLITICS – democracy and participation, political parties, electoral systems, voting behaviour and the media.

UK GOVERNMENT – constitution, parliament, PM and executive, relationship between the branches.

CORE POLITICAL IDEAS – Conservatism, Liberalism, Socialism

OPTIONAL POLITICAL IDEAS – Feminism.

GLOBAL POLITICS – theories of global politics, sovereignty and globalisation, global governance (conflict, poverty, human rights, environment), power and developments, regionalism and European Union.

Assessment

The course is assessed externally at the end of Year 13 with three two-hour examinations consisting of mainly essay-based questions.

Exam Board Entry Requirements

Edexcel

Minimum grade 5 in GCSE English & Maths

What could this qualification lead to?

This A level would lead directly into subject related university courses and careers, and indirectly into a wide range of higher education courses and career choice

- BA (Hons) Politics
- BA (Hons) Law
- Careers in politics e.g. Journalist
- Careers in law e.g. Solicitor/Barrister



PSYCHOLOGY

What will I study?

In Psychology you will look at various different approaches that explain what makes us the way we are. This includes looking at the extent to which our mental life and behaviour may be accounted for by our biology, environment, cognitive processes, and the conscious and unconscious aspects of the mind. You will explore a wide variety of theories on all aspects of behaviour, such as early childhood, the power of groups, genetic vulnerability of mental illness and the role of memory. The importance of critically evaluating evidence is explored through an in-depth study of research methods. Critical analysis is a key feature of Psychology and you will discuss and apply wider questions such as 'are we born or made', 'can we choose or is our behaviour determined'. Psychology compliments a wide range of A level subjects.

Assessment

Paper 1: Introductory topics in psychology (social influence, memory, attachment, psychopathology) 33.3%

Paper 2: Psychology in context (approaches, biopsychology, research methods) 33.3%

Paper 3: Issues and options in psychology (issues & debates, gender, schizophrenia, aggression) 33.3%

Exam Board Entry Requirements

AQA

Minimum grade 5 in GCSE English & Maths

What could this qualification lead to?

This A level would lead directly into subject related university courses and careers, and indirectly into a wide range of higher education courses and career choices.

- BSC (Hons) Psychology
- BA (Hons) Social Science
- Careers in healthcare e.g. Clinical Psychologist
- Careers in education e.g. Child Psychologist



RELIGIOUS STUDIES

What will I study?

The Religious Studies course is made up of three strands: Philosophy of Religion; Religious Ethics and Christianity. These three strands work together to help you to establish a broad understanding of Philosophy and Ethics from a Christian perspective. These topics enable you to develop discursive, analytical and evaluative skills that are good, transferable academic skills. At a recent Theology conference attended by De Lisle students, Philosopher Peter Vardy said Theology A level is "...rigorous, academically relevant..." and that "the skills are sought after by employers."

Assessment

A level: Three, two hour exams, one for each strand of the course.

Exam Board

Eduqas

Entry Requirements

Minimum grade 5 in GCSE Religious Studies or grade 5 in English if not studied at GCSE

What could this qualification lead to?

This A level would lead directly into subject related university courses and careers, and indirectly into a wide range of higher education courses and career choices.

- BA (Hons) Theology and Religion
- BA (Hons) Philosophy
- Careers in healthcare e.g. Health Service Manager
- Careers such as law



SOCIOLOGY

What will I study?

This course will take you on a fascinating journey where you will develop an understanding of the complex and rapidly changing world in which we all live.

This course will cover topics such as: culture and identity, education, crime and deviance, beliefs in society, theory and methods, so that you develop a critical awareness of society today and a deeper understanding of how the social world shapes and controls us.

It is a relevant and thought-provoking course, set to challenge and inspire you.

Assessment

A level: Three exams - all 2 hours in length.

Exam Board

AQA

Entry Requirements

Minimum grade 5 in GCSE Sociology or grade 5 in English if not studied at GCSE

What could this qualification lead to?

This A level would lead directly into subject related university courses and careers, and indirectly into a wide range of higher education courses and career choices.

- BA (Hons) Sociology
- BA (Hons) Social Science
- Careers in business and industry e.g. Human Resources Manager
- Careers in community care e.g. Social Worker



SPANISH

What will I study?

During the course you will study a range of themes and sub themes to help you to communicate effectively across a range of issues:

Social issues and trends: Aspects of Spanish-speaking society: current trends

- Los valores tradicionales y modernos
- El ciberespacio • La igualdad de los sexos

Artistic culture: Artistic culture in the Spanish-speaking world

- La influencia de los ídolos
- La identidad regional en España • El patrimonio cultural

The year 12 course builds confidence and provides a solid foundation for the study of the themes and sub-themes in year 13.

Social issues and trends: Aspects of Spanish-speaking society: current issues

- La inmigración • El racismo • La convivencia

Political and artistic culture: Aspects of political life in the Spanish-speaking world

- Jóvenes de hoy, ciudadanos del mañana
- Monarquías y dictaduras • Movimientos populares

In addition, Year 12 students study a film and Year 13 students study a text.

Assessment

Paper 1: Listening, reading, writing = 50%

Paper 2: Writing = 20%

Paper 3: Speaking = 30%

Exam Board

AQA

Entry Requirements

Minimum grade 5 in GCSE Spanish



What could this qualification lead to?

This A level would lead directly into subject related university courses and careers, and indirectly into a wide range of higher education courses and career choices.

- BA (Hons) Spanish
- BA (Hons) Modern Languages and Culture
- Careers in business e.g. Export Manager
- Careers in international relations e.g. Diplomat/Politician





Introducing T Levels

T-LEVELS
THE NEXT LEVEL QUALIFICATION



What are T Levels?

T Levels are new, government-backed, career focused qualifications for 16- to 19-year olds. Each two-year course has been designed with employers from multiple sectors to prepare you for the world of work, or further study like a higher level apprenticeship or university.

How will I learn?

Every T Level is taught through a mix of classroom and workplace-based learning. You will spend 80% of your time at school and 20% of your time developing the skills needed for the workplace on a 45-day industry placement.

The 45-day industry placement

The industry placement is designed to help you:

- find out more about career opportunities
- build essential skills, such as teamwork and communication
- put your skills and knowledge into practice in the real world of work, and build contacts with employers

As well as helping you to make more informed choices about

your career pathway, you will gain experience that employers look for when it comes to hiring.

What T Levels will De Lisle offer?

We are proud to offer T Level Science. For those interested in a career in science, you will learn in our brand new, industry standard laboratory.

Assessment

- **Core content:** assessed through an external exam and an employer-set project
- **Specialism:** assessed through practical assignments
- **Industry Placement:** must be completed (not assessed)

Entry Requirements

De Lisle Sixth Form entry requirements (see page 40)

Qualification

One T Level is equivalent to three A levels, so has the same UCAS points value (the system that calculates university offers).





SCIENCE

Learn in our brand-new, industry standard, dedicated laboratory

What will I study?

Core content

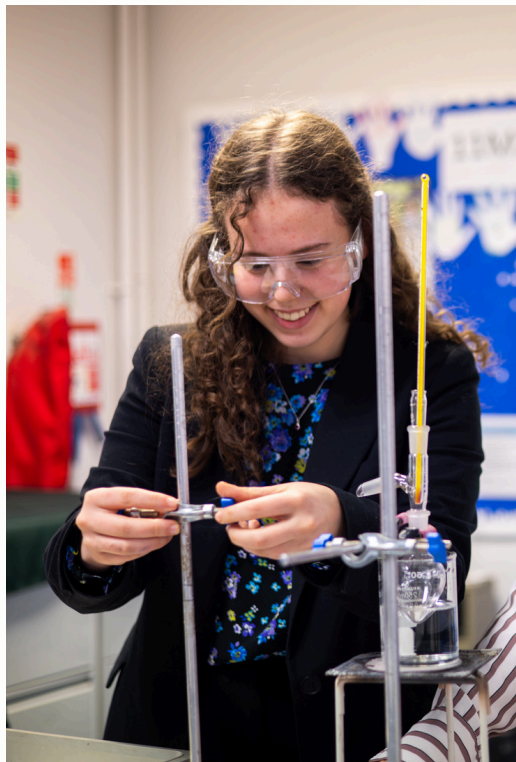
You will develop a general understanding of health and science:

- working within the health and science sector
- health, safety and environmental regulations
- managing information and data
- principles of good scientific and clinical practice • core science concepts including the structure of cells, tissues and large molecules, genetics, microbiology and immunology

You will also learn about topics specific to science:

- understanding the science sector
- further science knowledge, including cell cycle and cellular respiration, enzyme and protein structure, pathogens, classification of biological materials, kinetic changes and relevant analytical techniques
- scientific methodology
- experimental equipment and techniques
- ethics of science

In addition to the core content, each student will study the occupational **specialism** of laboratory sciences.



What could this qualification lead to?

This T level would lead directly into subject related university courses and careers, and indirectly into a wide range of higher education courses and career choices.

- Food Manufacturing Inspector
- Laboratory Technician
- Metrologist

BTECs & OTHER LEVEL 3 QUALIFICATIONS

Criminology
(Level 3 Applied Diploma)

Sport & Physical Activity
(Level 3 CTEC)

All Level 3 qualifications are
equivalent to one A level.





CRIMINOLOGY

What will I study?

This Level 3 Applied Diploma (equivalent to one A level) will introduce you to the culture of crime and workings of the criminal justice system including the police, courts, prosecution services, prisons and rehabilitation services. Criminology is about crime and punishment. Crime is always in the public eye and has emerged as a social phenomenon inseparable from our day-to-day lives. Criminology is an exciting interdisciplinary subject which draws on law, psychology and sociology to examine how crime is defined, why people commit crimes, and how society responds.

Unit 1 – Changing awareness of crime

Unit 2 – Criminological theories

Unit 3 – Crime scene to courtroom

Unit 4 – Crime and punishment

Assessment

Assessment is by controlled assessment (Units 1 and 3) and external examination (Units 2 and 4) and students will be assessed in both Year 12 and Year 13.

Exam Board

WJEC

Entry Requirements

Minimum grade 4 in both GCSE English and GCSE Maths

What could this qualification lead to?

This qualification carries UCAS points and is recognised by higher education providers.

- BA (Hons) Criminology
- BSc (Hons) Policing and Criminal Investigation
- Careers in policing e.g. Police Officer
- Careers in community e.g. Social Worker



SPORT & PHYSICAL ACTIVITY

What will I study?

This Level 3 Cambridge Technical Extended Certificate in Sport and Physical Activity (equivalent to one A level) provides an opportunity for you to be introduced to the sport sector. This qualification supports progression to higher education when taken as part of a programme of study that includes other vocational or general qualifications.

You will study three mandatory units: body systems and the effects of physical activity, sports coaching and activity leadership and sport organisation and development. The mandatory content will allow you to gain an understanding of sport in the wider contexts of coaching and leadership, anatomy and physiology, the body's short and long term response to physical activity and the framework of sport in the UK and the organisations involved. You'll also develop transferable skills such as planning, communication, adaptability and leadership.

Assessment

There are five units taught over two years, two of these externally assessed and three are internally assessed.

External assessment:

Body systems and the effects of physical activity
Sports organisation and development

Internal assessment:

Sport coaching and activity leadership
Sport and exercise psychology
Sport and exercise sociology

Exam Board Entry Requirements

OCR

Minimum grade 4 in both GCSE English and GCSE Maths

What could this qualification lead to?

This qualification carries UCAS points and is recognised by higher education providers.

- BSC (Hons) Sports Development and Exercise
- BSC (Hons) Sports Science
- Careers in coaching and education e.g. PE Teacher
- Careers in sports management e.g. Sports Development Officer





EXTENDED PROJECT QUALIFICATION



What will I study?

The EPQ is described as ‘a single extended piece of work which requires a high degree of planning, preparation, research and autonomous work, providing valuable additional evidence for entry to higher education’. The EPQ gives students the opportunity to research a topic of their interest; this does not have to be based on an academic subject that the student is studying but it should link to their interests or future educational aspirations.

During the EPQ taught programme students will cover; planning, time management, research skills, academic writing, referencing, how to avoid plagiarism, presentation skills and more. A number of these sessions will be delivered in college by universities and in the past there has been an opportunity to use higher education research facilities as part of a group visit.

Assessment

The qualification is assessed through the completion of a detailed logbook, a written report or artefact supported by a written report and a presentation.

Exam Board

AQA

Qualification

The EPQ is a level 3 qualification which is graded A*-E. It carries UCAS points to the value of half an A level and is regarded highly by universities including Cambridge who state “We welcome the introduction of the Extended Project and would encourage you to undertake one as it will help you develop independent study and research skills and ease the transition from school/college to higher education.”



PROGRAMME OF STUDY



The Sixth Form Team will offer guidance and advice to students and parents of the possible programmes of study available which can be adapted to suit individual needs.

A planned programme of study will be agreed for each student at the start of Year 12. This will consist of a main programme and a core programme.

The programme of study will not be altered without the agreement of the Sixth Form Team and the consent of parents.

Some subjects can be studied without prior experience at GCSE. These include all vocational qualifications and the following A levels:

- Geography
- Economics
- Business
- Psychology
- Media Studies
- Politics

- Drama & Theatre
- History
- Sociology
- Religious Studies

Personal development and RPE are provided for all students and are taught by personal tutors and the RE Department. This is compulsory, in addition to the EPQ.

Higher Education Fair

Every year we take our Year 12 students to the HE Fair. This provides them with the opportunity to visit different university stalls, collect prospectuses and speak to staff about the courses on offer. This is a good opportunity for students to explore their options after A levels.

Work Experience

All Sixth Form students are expected to undertake one week of high quality and meaningful work experience at the end of the summer term in Year 12. This is mandatory but there is support on hand to help you identify a suitable employer in the local area.

As well as giving you a taste of working life, this also offers a valuable opportunity to add to your CV or university application.



“The opportunity to study subjects that you have a passion for is a great experience. Although the transition from GCSE to A level is a large one, all students can be safe in the knowledge that their teachers and the Sixth Form Team will help them every step of the way.

Studying at De Lisle Sixth Form supported my development as a learner and prepared me for my next steps in Higher Education.”

Millie - Former Head Girl

ENTRY REQUIREMENTS

To be accepted into De Lisle College Sixth Form students need to achieve four grade 4s and two grade 5s at GCSE.

A minimum of grade 4 in English & Maths is strongly recommended for all of our courses.

Some subjects may require higher grades.

Students who achieve a minimum of five grade 7s can study four A levels.

For an example of our blended curriculum please see our website.

How to apply

1. Know your choices.

This is an important step in your education; make sure you research your options and think about which establishment offers you the best platform to build your future on.

2. Visit.

Attend our open evening in November or come into college and meet key staff and students and have a tour.

The school website has a wealth of curriculum and community information and provides a good insight into life at De Lisle.

3. Complete an application form.

Complete the online application by the deadline as published on our website; a link can be found on the De Lisle College website. Attend an interview with one of the Sixth Form Team.

4. Following a **conditional offer** attend the induction day to truly experience the Sixth Form at De Lisle and begin a specialised induction and supported transition to key stage five.

“Your vision is to give all students opportunities to achieve by working collaboratively”

Ofsted Report



De Lisle College
Thorpe Hill
Loughborough
Leicestershire LE11 4SQ

Headteacher:
Mr C Maher

For further information:

Tel: 01509 268739

email:

post16@delisle.leics.sch.uk

www.delisle.org.uk

Facebook, Instagram & X can be found: @delisleacademy



De Lisle College
A Catholic Voluntary Academy

De Lisle College
SIXTH FORM

De Lisle College: A Catholic Voluntary Academy is part of the St Thomas Aquinas Catholic Multi-Academy Trust an exempt charity and a company limited by guarantee, registered in England with Company Number 8090890 and has a registered office at Unit 5 Charnwood Edge Business Park, Syston Road, Cossington, LE7 4UZ